



Wales Drive, Gamlingay, SG19 3FB
£675,000

 4  3  3  B

LATCHAM —————
————— DOWLING

ESTATE AGENTS

Latcham Dowling are delighted to offer for sale this beautifully presented detached executive family home sitting on a good size walled plot. The property benefits from separate reception rooms, open plan fitted kitchen / breakfast room opening into a vaulted dining room, which has bi folding doors opening to the rear garden. A cloakroom and utility room, complete with integrated Neff washing machine complete the ground floor accommodation.

To the first floor are four double bedrooms with the vaulted master bedroom having an en-suite shower room .There is a four piece family bathroom suite.

Externally there is an enclosed rear & side garden with large patio providing an excellent outdoor entertaining space & a double garage, with EV charger point & driveway parking for two vehicles. In addition there are Solar panels thus helping with electric bills.

Built by Morris Homes in 2022 to the 'Winster' design the property benefits from the balance of the NHBC guarantee that has circa 7 years remaining.

Gamlingay is a large South Cambridgeshire village located approximately 16 miles west of Cambridge with easy access to the A1 & M11. The village falls within the Comberton School catchment area & offers an extensive range of shops & local amenities including the award winning Eco Hub which is a successful community and business centre serving the village of Gamlingay and the surrounding area.

Within the village are a variety of spots for open walks in the local countryside. For the London commuter there is an excellent rail service from St Neots, Sandy or Biggleswade into London Kings Cross.

This is a great family home and wants for nothing and an early viewing is highly recommended.





Entrance

Entrance Hall

Cloakroom

Study

11'11 x 9'10 (3.63m x 3.00m)

Living Room

18'6 x 12'4 (5.64m x 3.76m)

Kitchen/breakfast room

18'4 x 16' (5.59m x 4.88m)

Dining Room

11'8 x 10'4 (3.56m x 3.15m)

Utility room

First Floor

Landing

Bedroom One

16'3 x 14'10 (4.95m x 4.52m)

En Suite

Bedroom Two

12'7 x 9'2 (3.84m x 2.79m)

Bedroom Three

12'8 x 9'2 (3.86m x 2.79m)

Bedroom Four

11'8 x 10'10 (3.56m x 3.30m)

Family Bathroom

Outside

Rear Garden

Front Garden

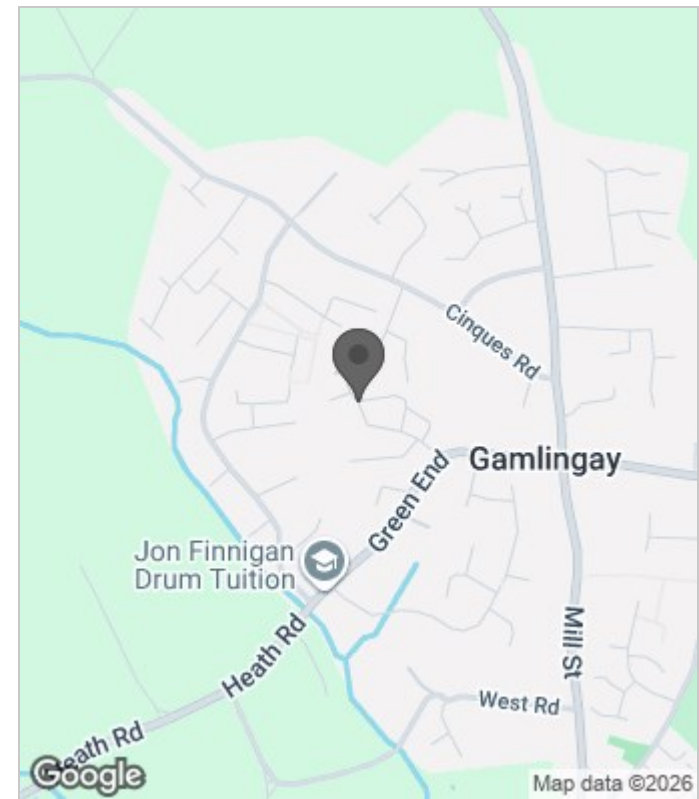
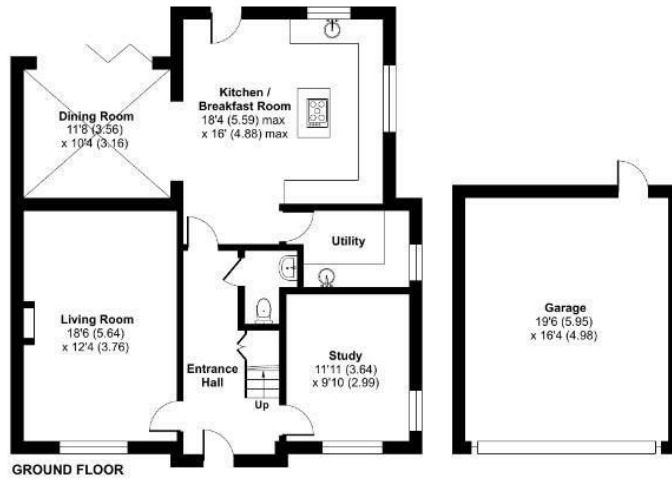
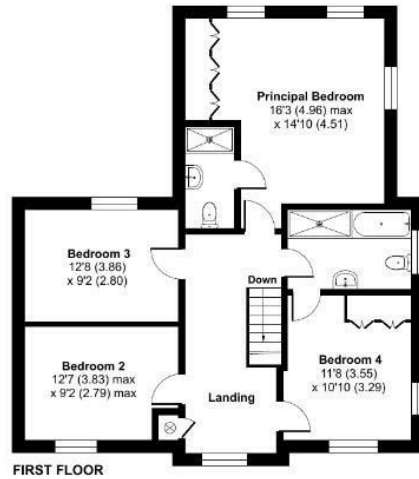
Double garage



Wales Drive, Gamlingay, Sandy, SG19

Approximate Area = 1799 sq ft / 167.1 sq m
 Garage = 319 sq ft / 29.6 sq m
 Total = 2118 sq ft / 196.7 sq m

For identification only - Not to scale



Energy Efficiency Rating		
	Current	Potential
Very energy efficient - lower running costs		
(92 plus) A		
(81-91) B	87	88
(69-80) C		
(55-68) D		
(39-54) E		
(21-38) F		
(1-20) G		
Not energy efficient - higher running costs		
England & Wales	EU Directive 2002/91/EC	

Floor plan produced in accordance with RICS Property Measurement 2nd Edition, incorporating International Property Measurement Standards (IPMS2 Residential). © richcom 2026. Produced for Latcham Dowling Ltd. REF: 1457721

These particulars, whilst believed to be accurate are set out as a general outline only for guidance and do not constitute any part of an offer or contract. Intending purchasers should not rely on them as statements of representation of fact, but must satisfy themselves by inspection or otherwise as to their accuracy. No person in this firm's employment has the authority to make or give any representation or warranty in respect of the property.